

All-Fora Side-Event "*Small ports in the Blue Economy strategy*"

May 10th, 2021

An overview of the existent infrastructure of Croatian sea ports

DRAŽEN ŽGALJIĆ

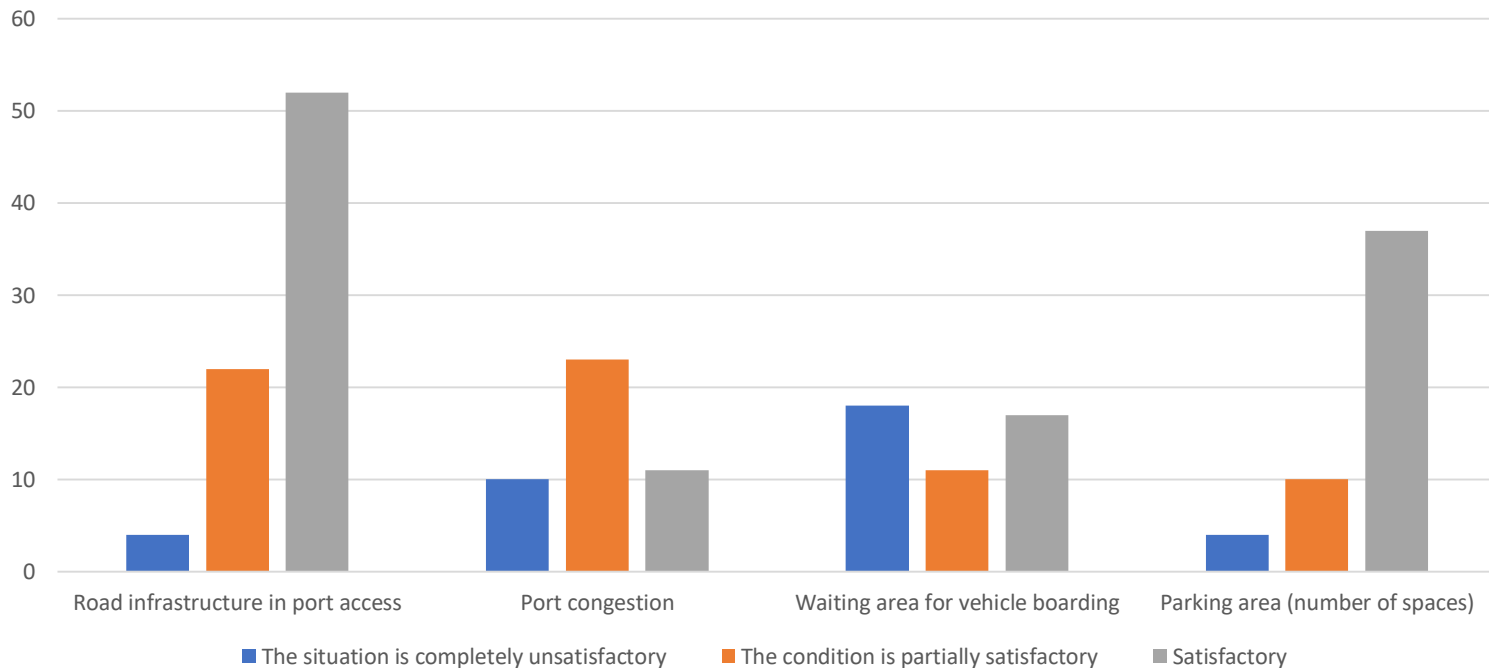
UNIVERSITY OF RIJEKA, FACULTY OF MARITIME STUDIES, RIJEKA - CROATIA

-
- **The port system of the Republic of Croatia consists of 436 ports, of which 94 ports have one or more state lines which perform regular public maritime passenger transport**
 - **Commercial marines are not included (approx. 100 nautical ports/marinas)**
 - **6 state and 22 county level Port authorities**
 - **43 ports provide the ro-ro line services, 51 ports the high-speed craft lines, and 24 ports the maritime passenger lines**
 - **Almost 36 million passengers embarked or disembarked in Croatian seaports in 2019**

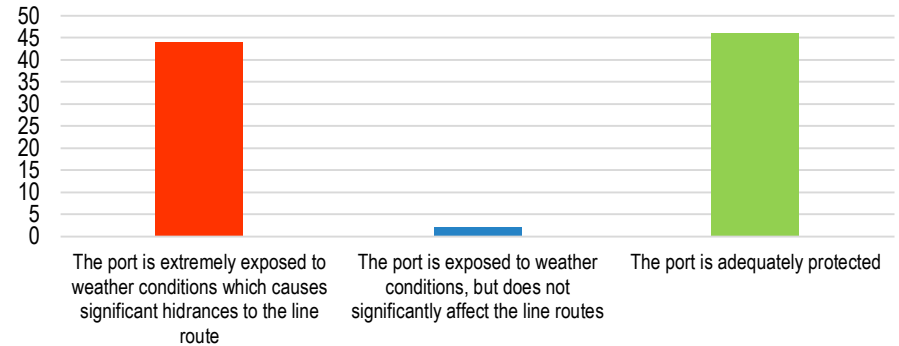
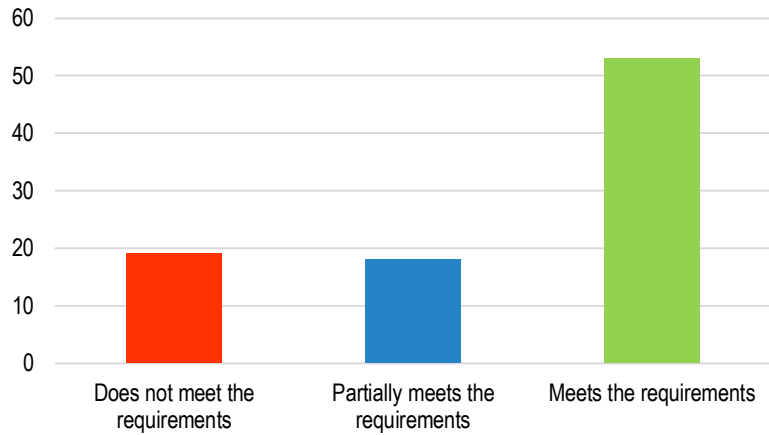
-
- **The research results show that there is no standard for the ports of the Republic of Croatia.**
 - **In this sense, we should distinguish between:**
 - (a) a standard of technical requirements in ports providing high-speed craft lines, ship lines or ro-ro lines, and
 - (b) a standard of services in those ports.
 - **The technical requirements that are to be taken into consideration are:**
 - a possibility of docking the vessels in the port in relation to its characteristics,
 - an adequate level of port security in all weather conditions, and
 - an adequate land waiting area with unhindered traffic while waiting for boarding, as well as embarking and disembarking of vehicles and passengers.

THE STANDARD OF TECHNICAL REQUIREMENTS IN THE PORTS

Overview of the port conditions considering the land infrastructure

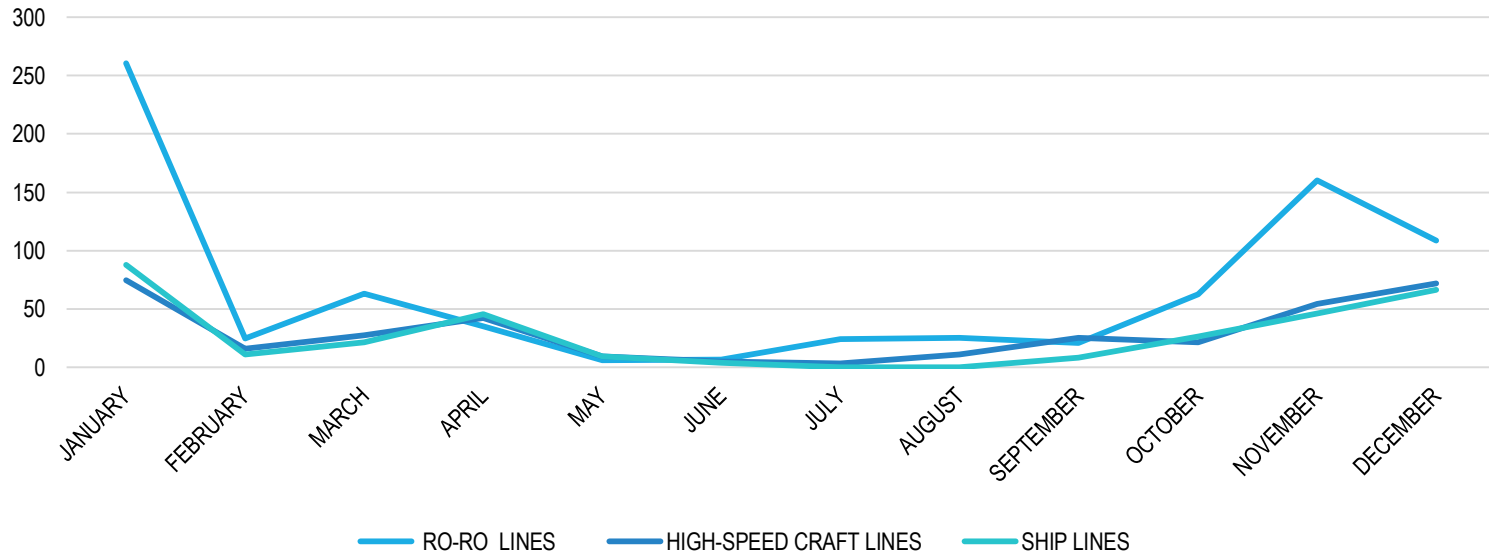


Overview of the port conditions considering the land infrastructure



The overview of the port conditions considering the possibility of ship docking (ship's length and draft)

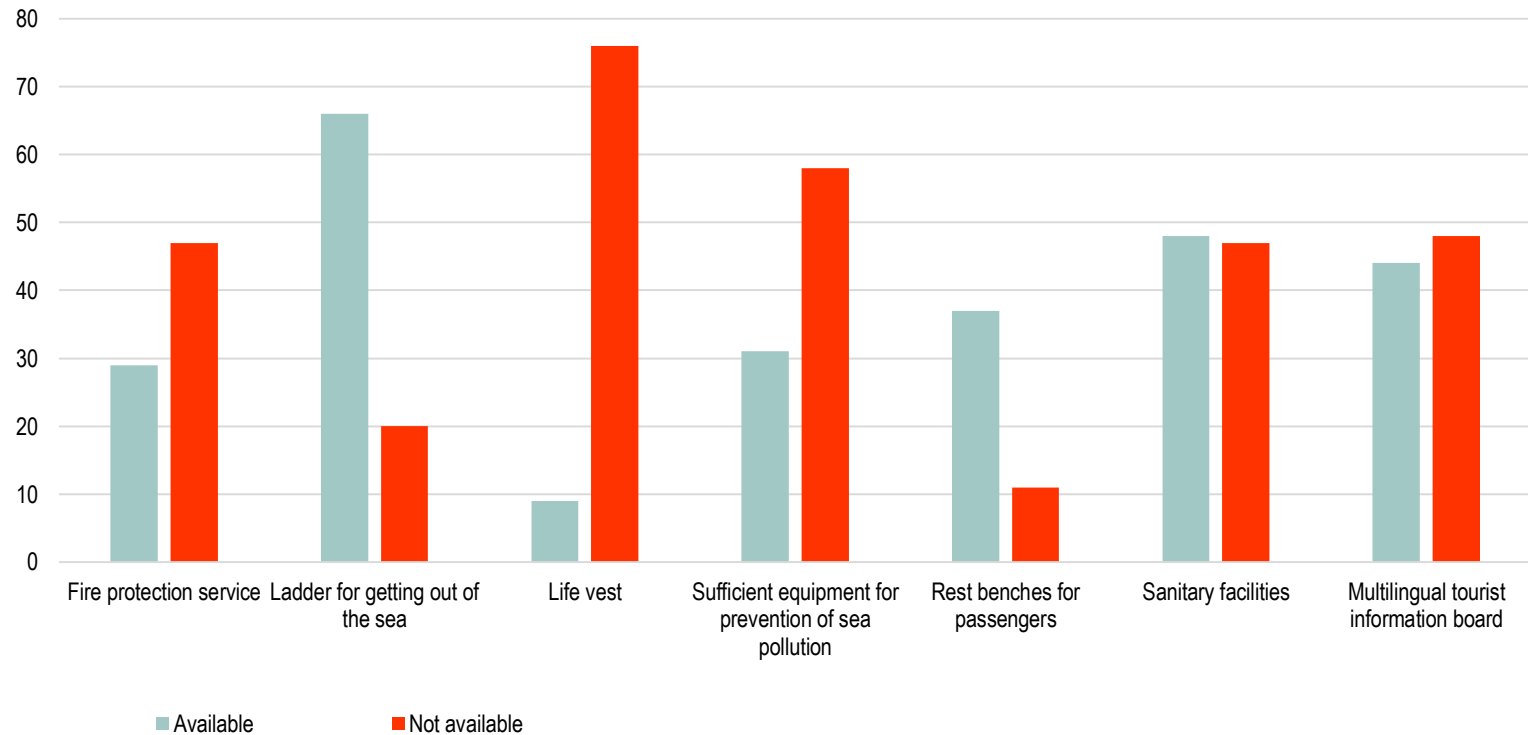
The overview of port conditions considering the safety of ship docking



Canceled journeys using the state lines in 2017

-
- **Due to the characteristics of the ship (length, draft), the port infrastructure in a large number of ports does not provide a safe berth for ships on maritime passenger lines.**
 - **The safety of the port from the influence of wind and sea in many ports is not satisfactory and interferes with the regular functioning of the maritime passenger line.**
 - **There is a significant lack of waiting area for vehicle embarkment on ro-ro ships in most of the ports. It is necessary to ensure the capacity of the waiting area for boarding in the dimensions of at least 100% of the ship's capacity.**
 - **Ports that provide services of ship and high-speed craft lines must provide sufficient parking space for a number of vehicles amounting to 10% of the passenger capacity.**
 - **In places where it is not possible to provide sufficient waiting area for vehicle embarkment and / or parking space due to the lack of available space, conservation conditions, etc., it is necessary to consider the possibility of relocating the port.**

SERVICES STANDARD IN PORTS



Overview of the availability of services in ports

Category	Service
	Mooring service
	Fire protection
	Presence of a port supervisor trained to prevent pollution and provide first aid
	Video surveillance of the port area
	Port area lighting
	Ladder for getting out of the sea
	Life vest
	Defibrillator within 100 meters of the ship
Ecology	Possibility of accepting waste from ships
	Availability of devices for proper disposal of waste oils and oily waters
	Land-based municipal waste collection equipment
	Sufficient equipment to prevent marine and sea pollution
	For all ports that have residential units within 100 m from the ship, it must be possible to supply the ship with electricity from the mainland
Travel pleasure	Accessibility of the port to persons with reduced mobility
	Benches for passenger rest
	Appropriate conditions for ticket sales
	Sanitary facilities
	First aid within 100 meters of the ship
	Multilingual tourist information board
	Information on the schedule of sea routes
	List of emergency numbers
	Map of the country and region
Destination map with labels of main sights and contacts	

The overview of minimal service requirements in ports

Category	Service
Category 1	Passenger shelter
	Secured pedestrian zones
	Sale of bus tickets (if any)
	Railway ticket sales (if any)
	Service facility within 100 meters
	Possibility of charging electric vehicles
	Wi-Fi signal availability
	Possibility of el. device power supply (mobile phone, laptop, etc.)
	Multilingual interactive information display for tourists
	List of main contacts (taxi, tourist boards, car mechanic, towing service, etc.)
	Basic general information about the Republic of Croatia (currency, language, religion, population, electricity voltage, drinking water, travel documents, customs regulations, information for drivers, etc.)
	QR code for tourist information
Category 2	
	Dedicated equipment for passenger embarkation (passenger embarkation / disembarkation tunnel, etc.)
	Luggage storage space
	Service to help people with reduced mobility
	Unaccompanied children assistance service
	Children's play area
	Shop within 100 meters
	Sale of souvenirs
	ATM within 100 meters
	Exchange office within 100 meters
	Bus timetable information
	Timetable information on railway lines
	Information about the sights of the destination and the region
	Taxi service within 300 meters

The overview of categories of services upgrade in ports

-
- **The need for meeting all technical requirements in ports is recognized by the port investment priorities for coming period in order to enable an appropriate connection of the islands with the mainland.**
 - **The minimum requirements must be ensured in ports in the shortest period possible.**
 - **It is necessary to encourage the national Port Authorities and County Port Authorities to ensure the upgrade of services in order to achieve a higher level of safety and commodity for passengers.**

Thank you for your attention!
